



: 011H1300
Unilift KP 150 M 1

1-

F,

, 10

10

: 0 .. 50 °C
998.2 / ³

: 10

DIN W.-Nr. 1.4301
AISI 304

DIN W.-Nr. 1.4031

AISI 304

:

:

Rp 1 1/4
: 7

:

- P1: 300

:

50 Hz

:

1 x 220-230

:

1.3 A

-

: 8 /400

(IEC 34-5):

IP68

(IEC 85):

F

:

10

:

SCHUKO

:

:

6.5

:

6.5

:

0.013 ³

1 Unilift KP 150 M 1



: 011H1300

1-

F,

, 10

10

: 0 .. 50 °C
 998.2 / 3

: 10

DIN W.-Nr. 1.4301
 AISI 304

DIN W.-Nr. 1.4031
 AISI 304

Rp 1 1/4
: 7

- P1: 300

: 50 Hz

: 1 x 220-230

: 1.3 A

- : 8 /400

(IEC 34-5): IP68

(IEC 85): F

: 10

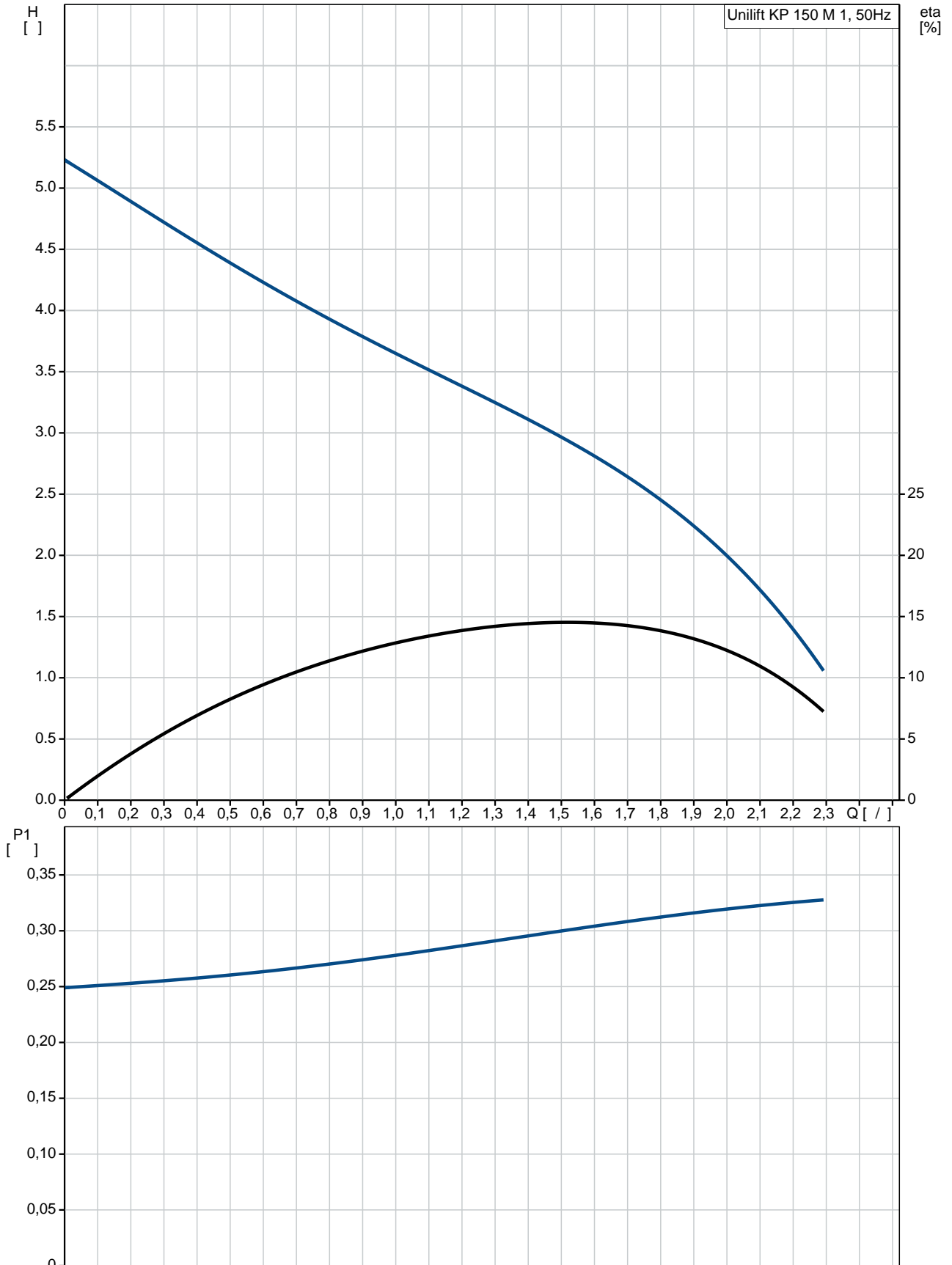
: SCHUKO

6.5

6.5

0.013 ³

011H1300 Unilift KP 150 M 1 50



Unilift KP 150 M 1
 EAN : 011H1300
 5700391115400

Ma : 2.36 /
 : 5.5
 : 10
 : A

DIN W.-Nr. 1.4301
 AISI 304

DIN W.-Nr. 1.4031
 AISI 304

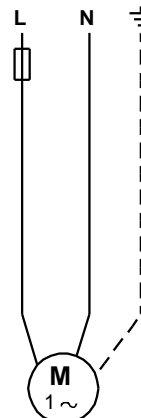
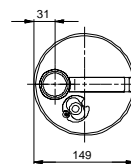
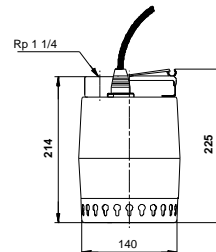
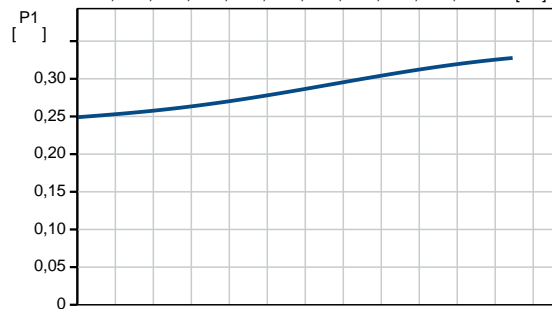
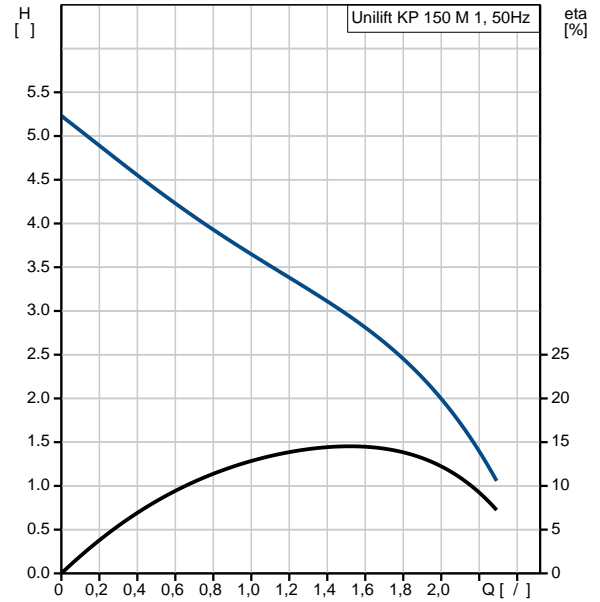
Rp 1 1/4
 7

0 .. 50 °C
 998.2 / ³

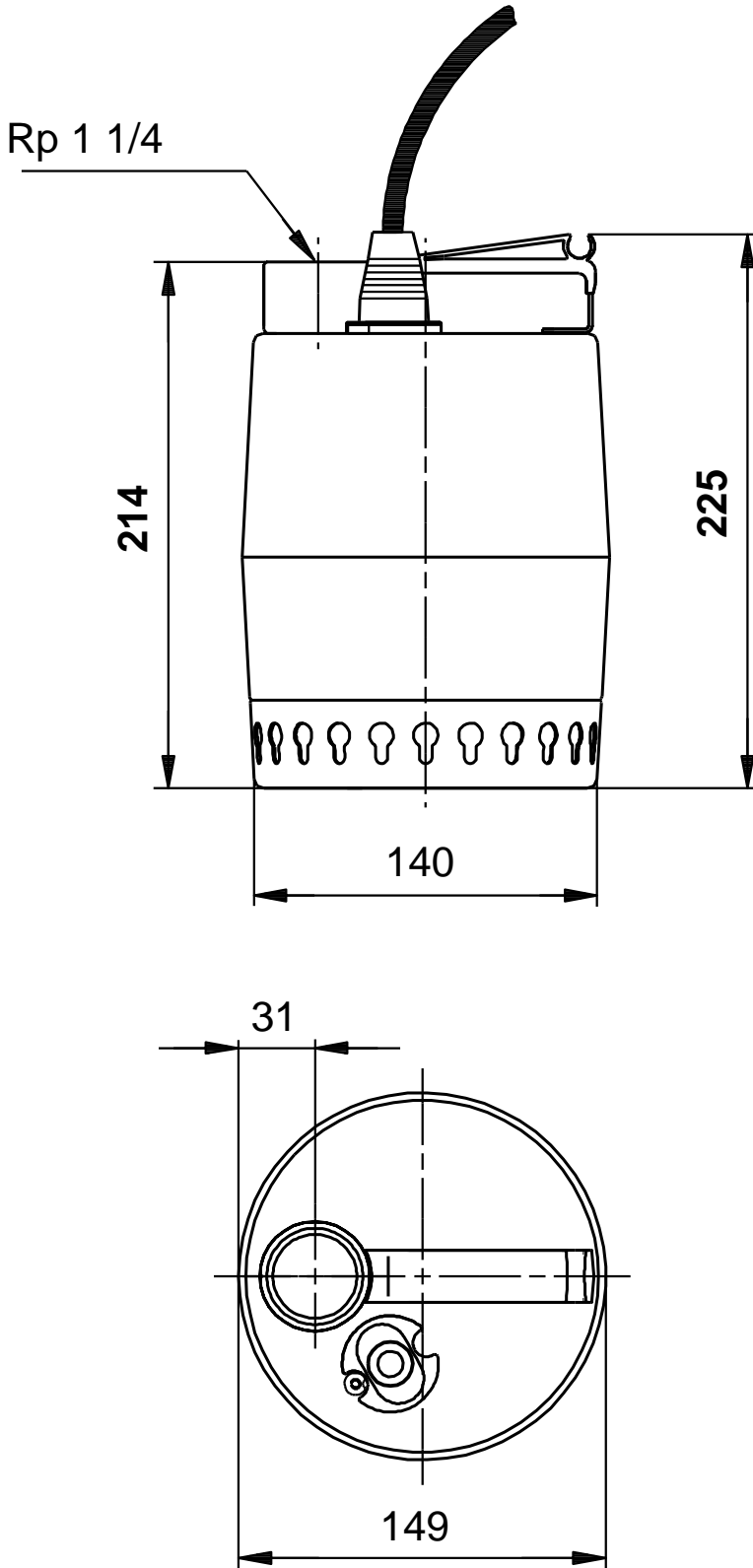
- P1: 300
 : 50 Hz
 : 1 x 220-230
 : 1.3 A
 : 8 /400
 (IEC 34-5): IP68
 (IEC 85): F
 : CONTACT

10
 SCHUKO

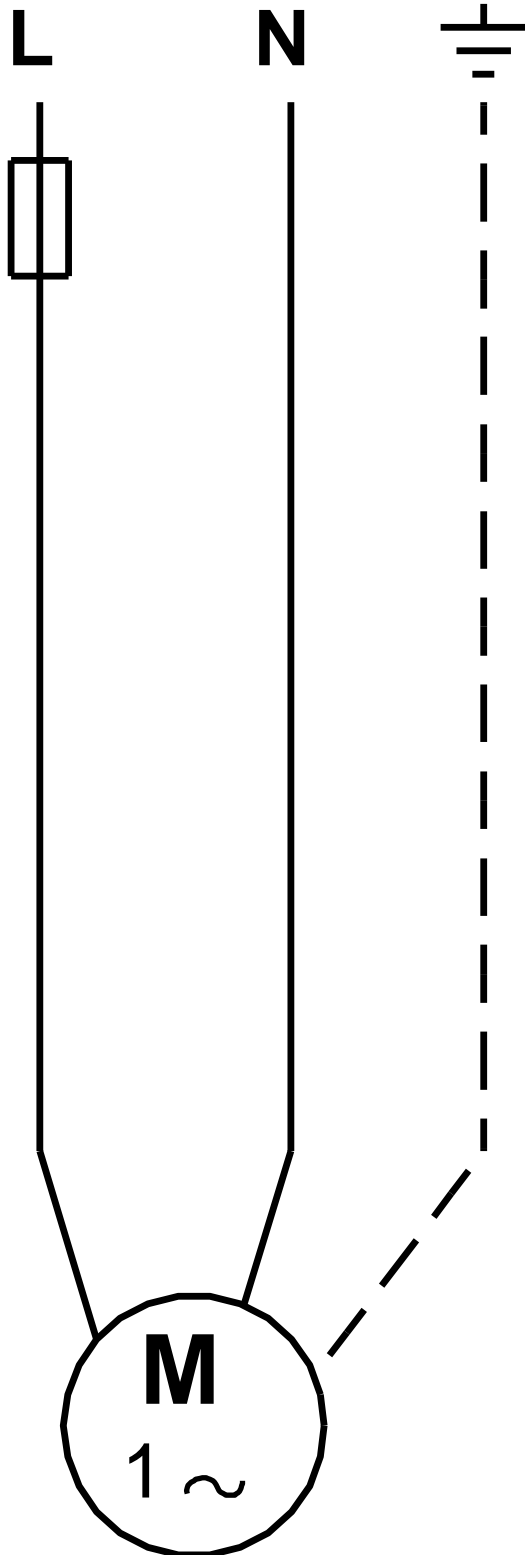
6.5
 6.5
 : 0.013 ³



011H1300 Unilift KP 150 M 1 50



011H1300 Unilift KP 150 M 1 50



! [], .