



: 012H1300
Unilift KP 250 M 1

1-

F,

, 10

10

: 0 .. 50 °C
998.2 / ³

: 10

DIN W.-Nr. 1.4301
AISI 304

DIN W.-Nr. 1.4031

AISI 304

:

:

Rp 1 1/4
: 7

:

- P1: 480

:

50 Hz

:

1 x 220-230

:

2.3 A

-

: 8 /400

(IEC 34-5):

IP68

(IEC 85):

F

:

10

:

SCHUKO

:

:

:

:

7

7.3

0.013 ³

1 Unilift KP 250 M 1



: 012H1300

1-

F,

, 10

10

: 0 .. 50 °C
 998.2 / 3

: 10

DIN W.-Nr. 1.4301
 AISI 304

DIN W.-Nr. 1.4031
 AISI 304

Rp 1 1/4
: 7

- P1: 480

: 50 Hz

: 1 x 220-230

: 2.3 A

- : 8 /400

(IEC 34-5): IP68

(IEC 85): F

: 10

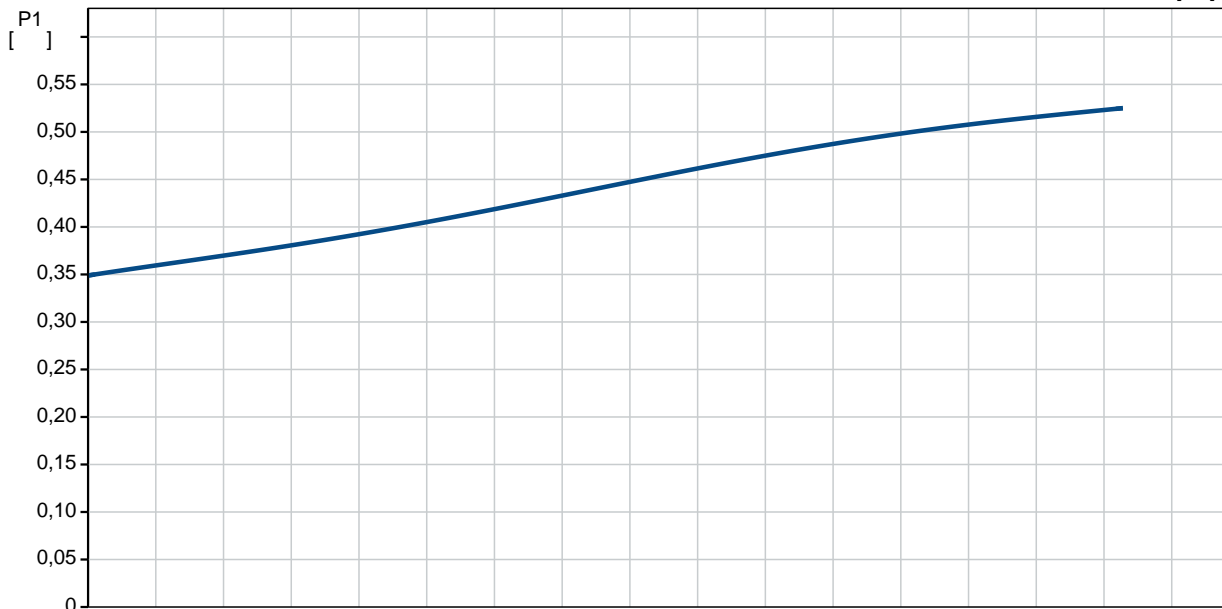
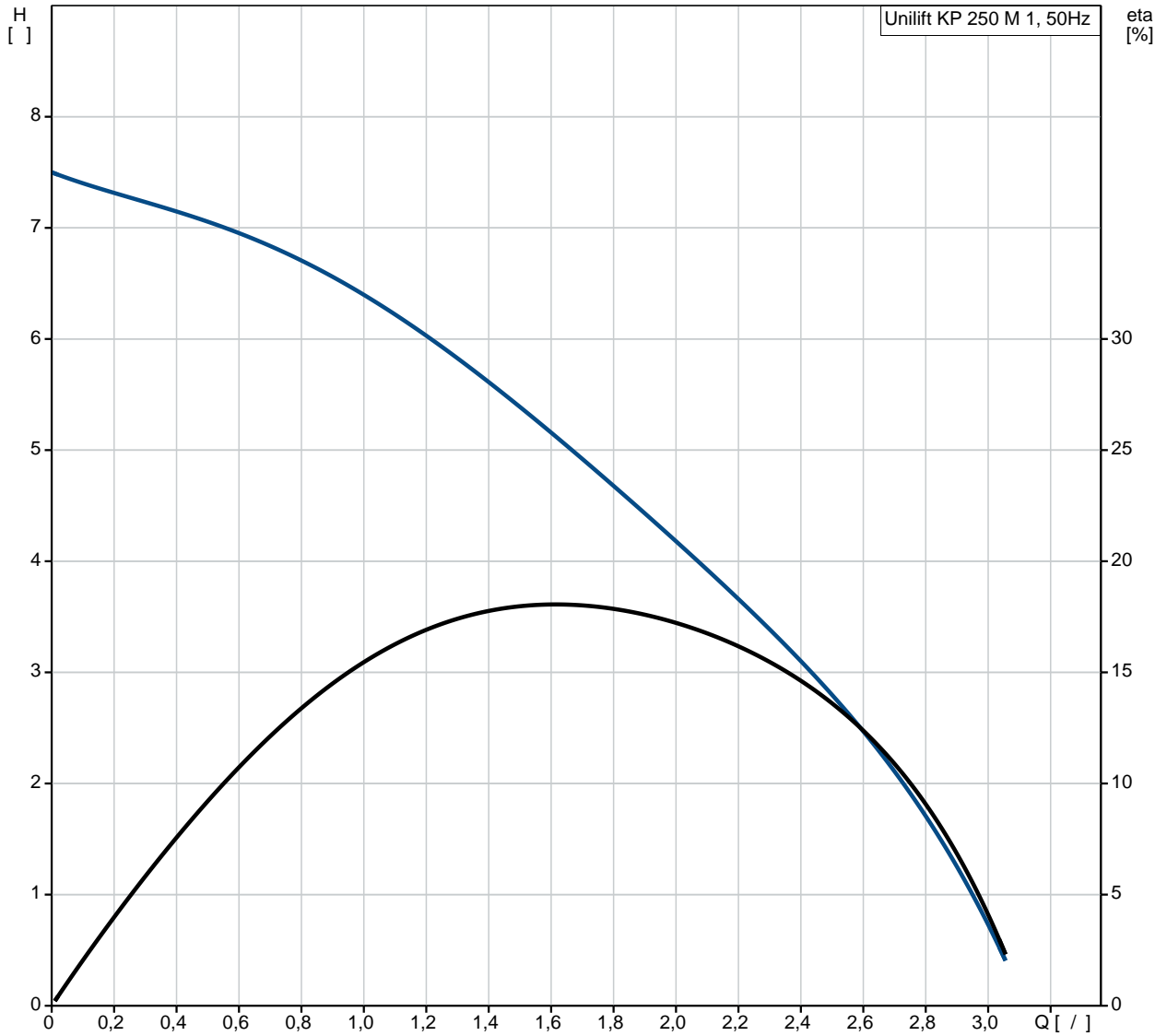
: SCHUKO

7

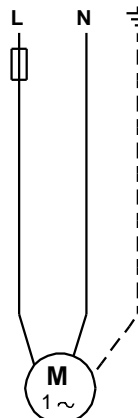
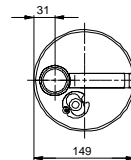
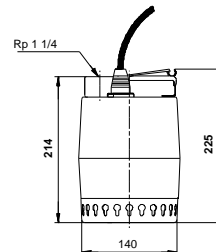
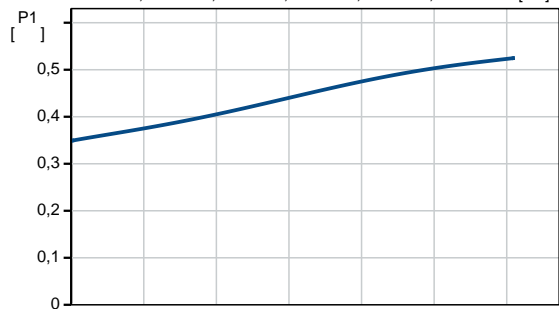
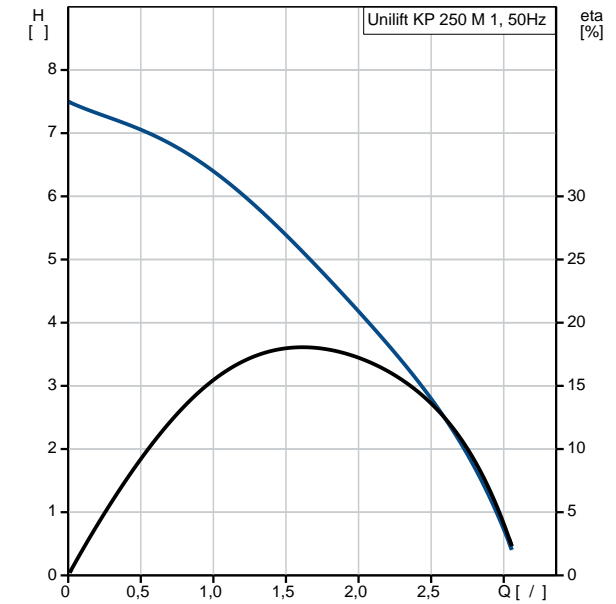
7.3

0.013 ³

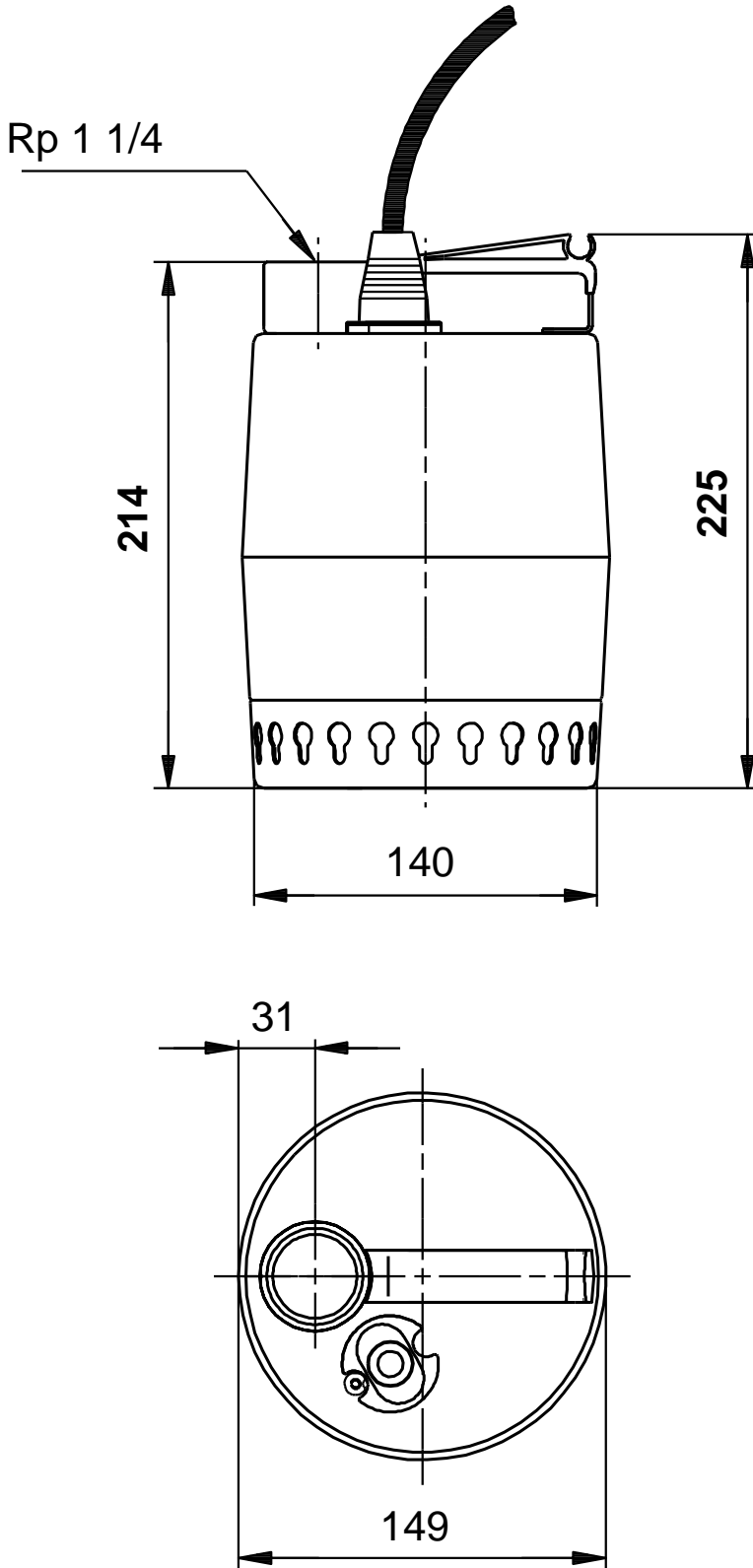
012H1300 Unilift KP 250 M 1 50



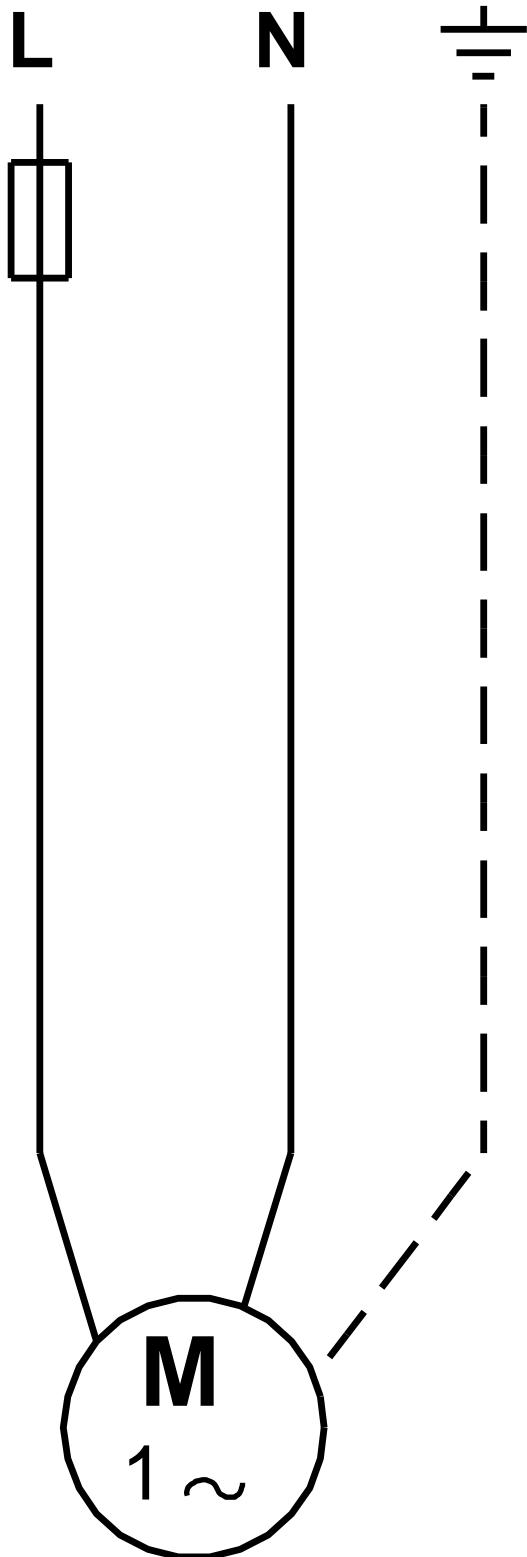
Unilift KP 250 M 1	
012H1300	
EAN	5700391116506
Ma	3.11 /
	7.5
	10
	A
	DIN W.-Nr. 1.4301
	AISI 304
	DIN W.-Nr. 1.4031
	AISI 304
	Rp 1 1/4
	7
	0 .. 50 °C
	998.2 / ³
- P1:	480
	50 Hz
	1 x 220-230
	2.3 A
	8 /400
(IEC 34-5):	IP68
(IEC 85):	F
	CONTACT
	10
	SCHUKO
	7
	7.3
	0.013 ³



012H1300 Unilift KP 250 M 1 50



012H1300 Unilift KP 250 M 1 50



! [], .