

 $F,$ 

, 5

10

: 0 .. 50 °C  
998.2 / 3

: 10

DIN W.-Nr. 1.4301  
AISI 304

DIN W.-Nr. 1.4031  
AISI 304

:

:

Rp 1 1/4  
: 2

:

- P1: 480

: 50 Hz

: 1 x 220-230

: 2.3 A

- : 8 /400

(IEC 34-5): IP68

(IEC 85): F

: 5

: SCHUKO

:

:

6.3

:

6.8

:

0.013 <sup>3</sup>

1 Unilift KP 250 A 1



: 012H1600

1-

F,

, 5

./

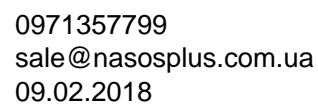
10

: 0 .. 50 °C  
998.2 / 3

: 10

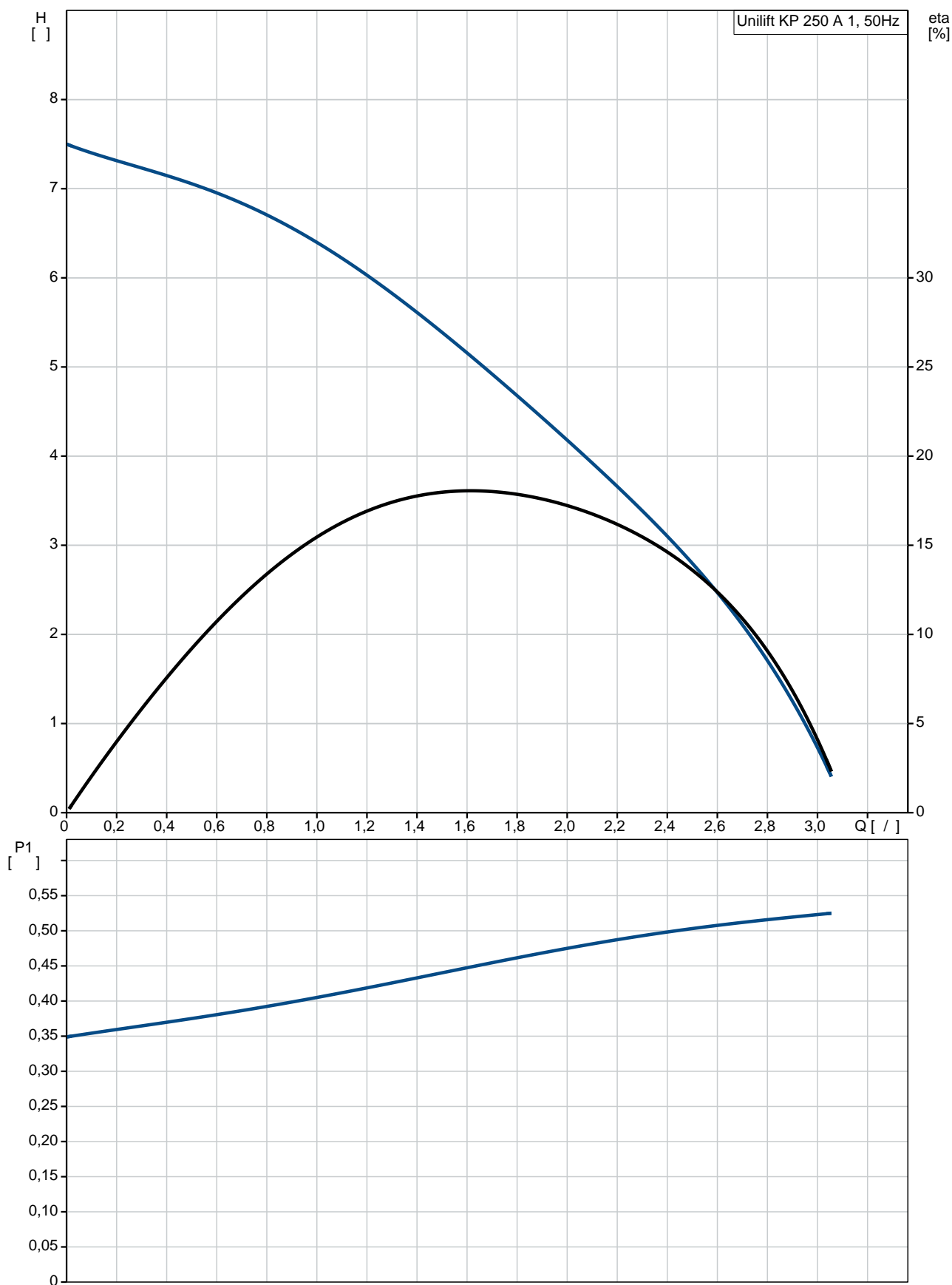
DIN W.-Nr. 1.4301  
AISI 304

DIN W.-Nr. 1.4031  
AISI 304



4/8

## 012H1600 Unilift KP 250 A 1 50



Unilift KP 250 A 1  
012H1600  
EAN : 5700391116575

Ma : 3.11 /  
: 7.5  
: 10  
: A

DIN W.-Nr. 1.4301  
AISI 304

DIN W.-Nr. 1.4031  
AISI 304

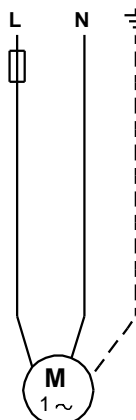
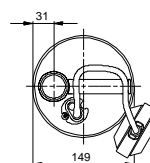
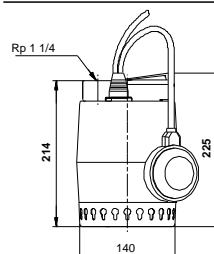
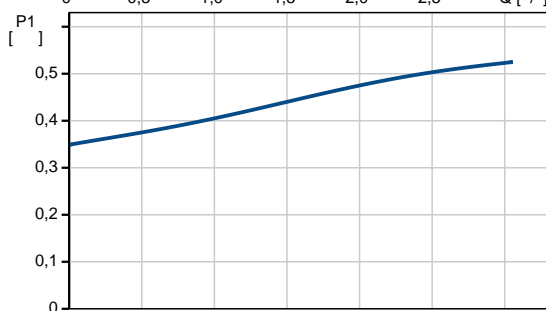
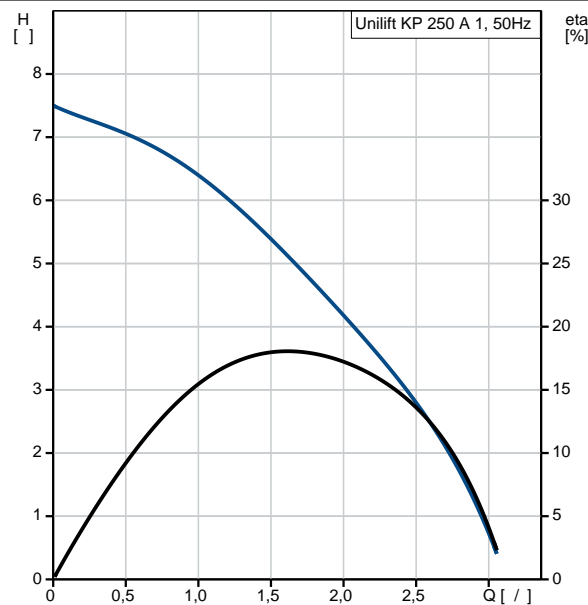
Rp 1 1/4  
: 2

: 0 .. 50 °C  
: 998.2 / <sup>3</sup>

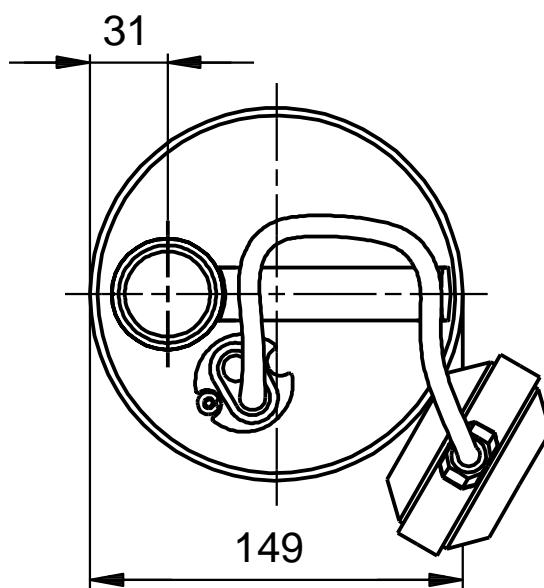
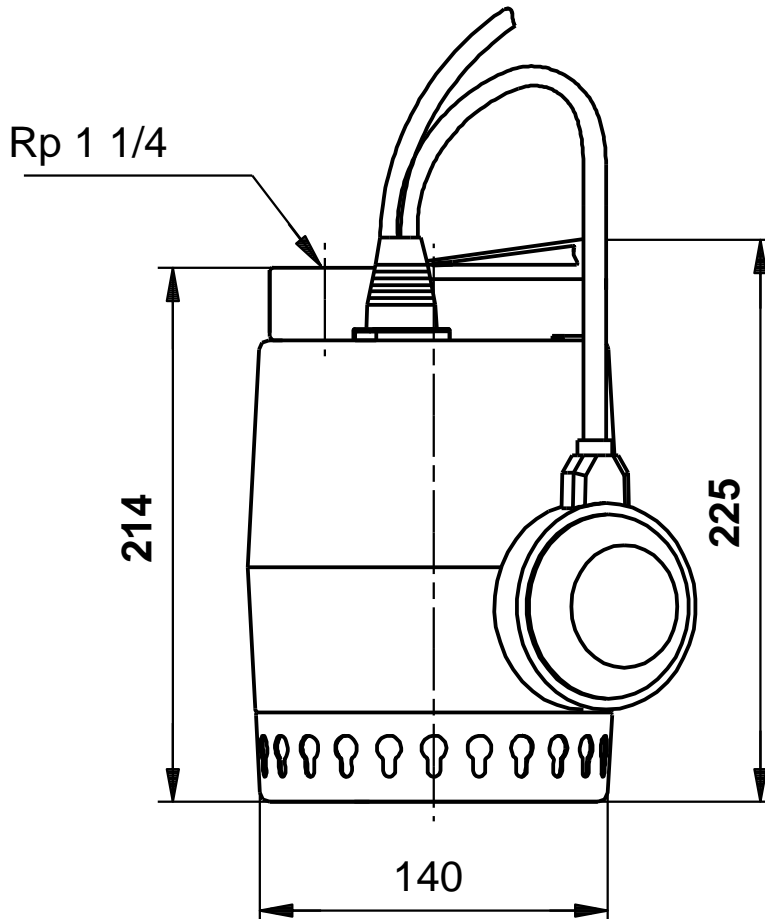
- P1: 480  
: 50 Hz  
: 1 x 220-230  
: 2.3 A  
: 8 /400  
(IEC 34-5): IP68  
(IEC 85): F  
: CONTACT

5  
: SCHUKO

6.3  
: 6.8  
: 0.013 <sup>3</sup>



## 012H1600 Unilift KP 250 A 1 50



**012H1600 Unilift KP 250 A 1 50**

