



## SOLOLIFT2 C-3

Sololift2 C-3 –

Sololift2 C-3

Sololift2 C-3

- 
- 
- 
- 
- 
- 
- 
- 

Ø22-40

, « »

( )

Ø36 40

EN12050-2,

( )

: 75(90) °C

998.2 / 3

: CE,TR,LGA,VDEEMV,VDE

ISO9906:2012 3B

:  
 :  
 :  
 : 32/36/40, 36/40/50  
 : 22/25/28/32/36/40  
 : 3X0,75MM2  
 :  
 - P1: 640  
 : 50 Hz  
 : 1 x 220-240  
 : 3.1 A  
 Cos phi - : 0,9  
 : 2800 /  
 (IEC 34-5): IP44  
 (IEC 85): F  
 : 1.2  
 : H05VV-F  
 : SCHUKO  
 :  
 : 7.6  
 : 9.3

1 SOLOLIFT2 C-3



Sololift2 C-3 –  
( )

Sololift2 C-3  
• ( 90°C)

Sololift2 C-3  
/

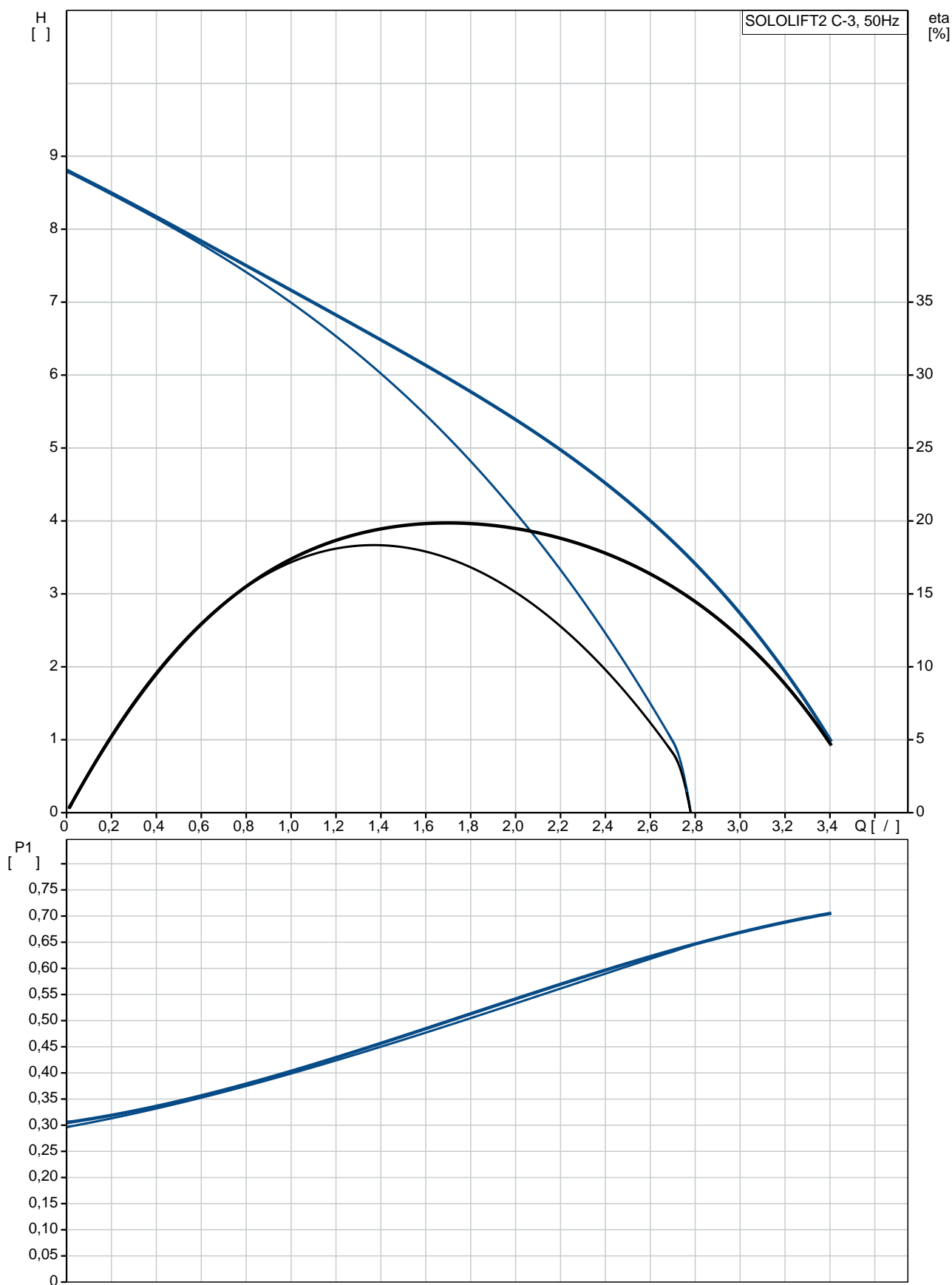
- ( )  
- Ø22-40  
- , « » ,  
- 40 - ( ) Ø36  
-  
-

EN12050-2,

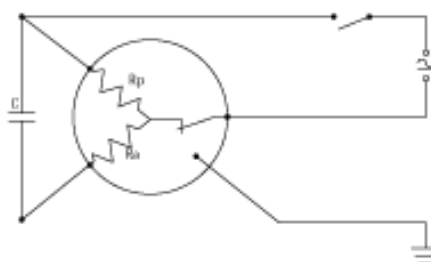
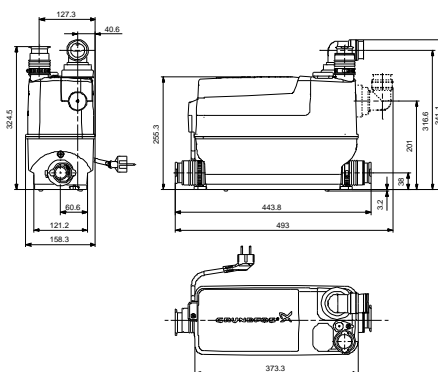
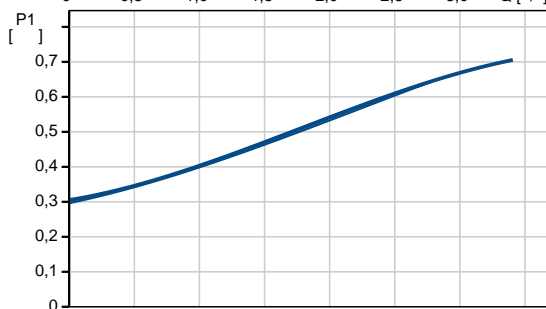
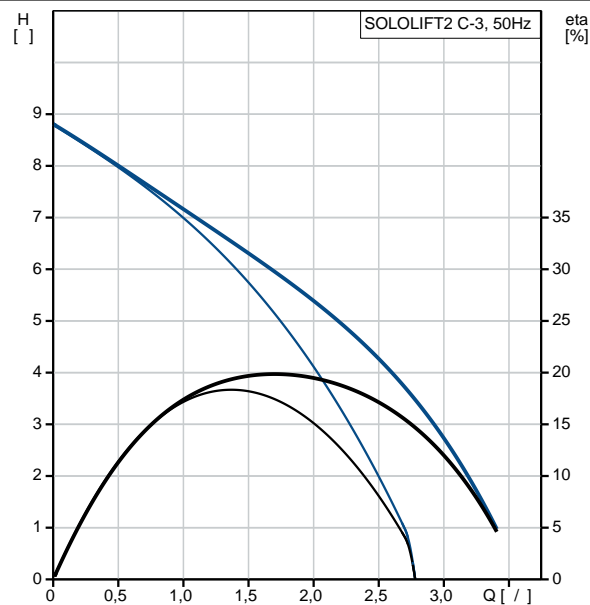
: 75(90) °C  
998.2 / 3

	:	CE,TR,LGA,VDEEMV,VDE
- :		ISO9906:2012 3B
	:	
:		
	:	
	:	32/36/40, 36/40/50
	:	22/25/28/32/36/40
	:	3X0,75MM2
	:	
	:	- P1: 640
	:	50 Hz
	:	1 x 220-240
	:	3.1 A
Cos phi -	- :	0,9
	:	2800 /
	:	(IEC 34-5): IP44
	:	(IEC 85): F
	:	1.2
	:	H05VV-F
	:	SCHUKO
	:	
	:	7.6
	:	9.3

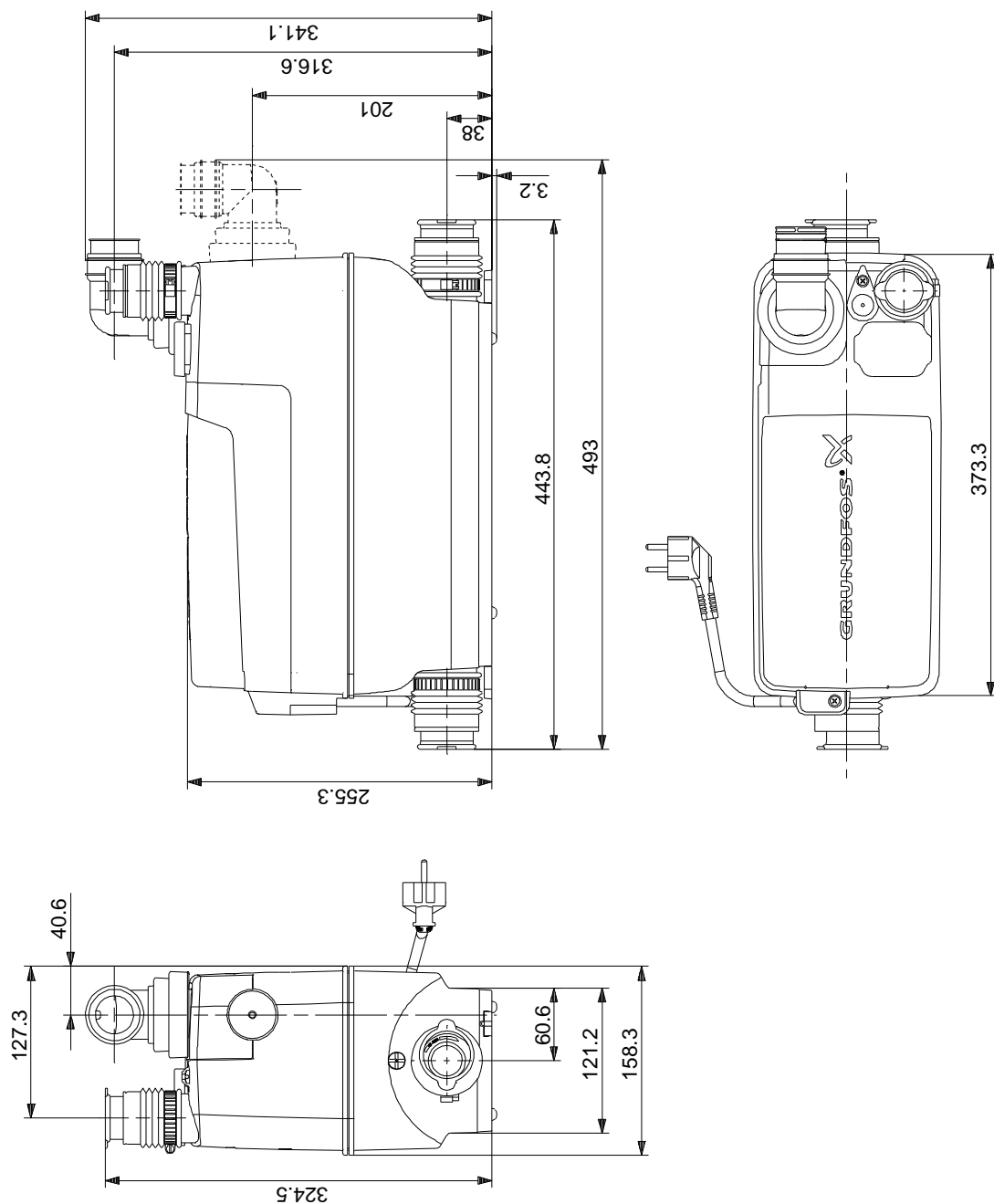
## SOLOLIFT2 C-3 50



		SOLOLIFT2 C-3
EAN		
		8.5
		CE,TR,LGA,VDEEMV,VDE
		ISO9906:2012 3B
		32/36/40, 36/40/50
		22/25/28/32/36/40
		3X0,75MM2
		75(90) °C
		998.2 / 3
	- P1:	640
		50 Hz
		1 x 220-240
		3.1 A
Cos phi -		0,9
		2800 /
	(IEC 34-5):	IP44
	(IEC 85):	F
		THERMIK S06-140-05
		1.2
		H05VV-F
		SCHUKO
		7.6
		9.3



## SOLOLIFT2 C-3 50



## SOLOLIFT2 C-3 50

