



**SOLOLIFT2 WC-3**

Sololift2 WC-3 -

Sololift2 WC-3

Sololift2 WC-3

Ø22-40

DN100

Ø36 40

EN12050-2,

: 50 °C  
998.2 / 3

:  
 : CE,TR,LGA,VDEEMV,VDE  
 - : ISO9906:2012 3B  
 :  
 :  
 :  
 : 32/36/40, 36/40/50, DN 100  
 : 22/25/28/32/36/40  
 : 3X0,75MM2  
 :  
 - P1: 620  
 : 50 Hz  
 : 1 x 220-240  
 : 3 A  
 Cos phi - - : 0,92  
 : 2800 /  
 (IEC 34-5): IP44  
 (IEC 85): F  
 : 1.2  
 : H05VV-F  
 : SCHUKO  
 :  
 : 7.3  
 : 10

1

SOLOLIFT2 WC-3



Sololift2 WC-3 -

Sololift2 WC-3

Sololift2 WC-3

•

-

-

-

-

-

-

-

-

-

-

Ø22-40

DN100

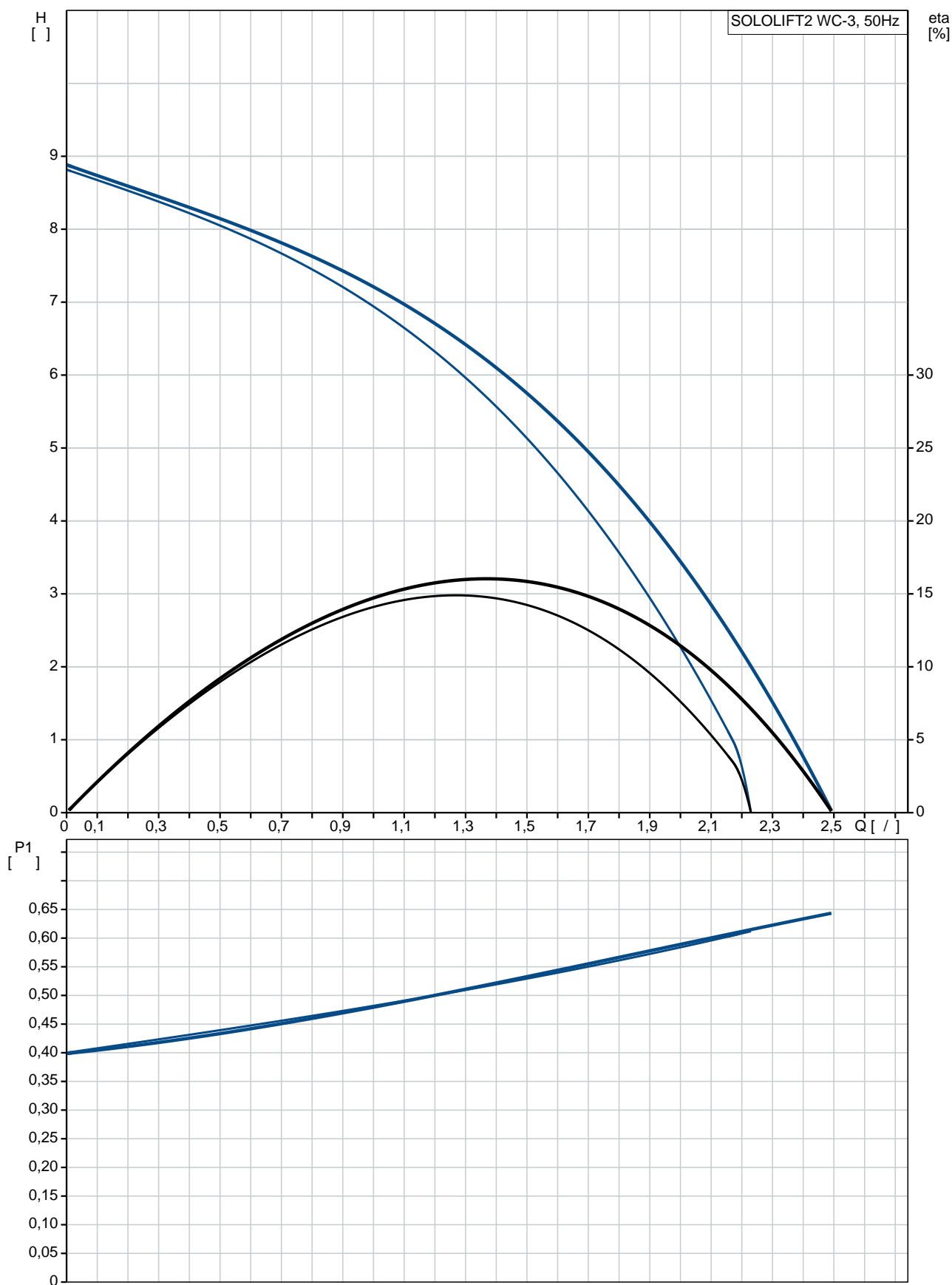
40

Ø36

EN12050-2,

:  
 :  
 : 50 °C  
 : 998.2 / 3  
 :  
 : CE,TR,LGA,VDEEMV,VDE  
 - : ISO9906:2012 3B  
 :  
 :  
 :  
 : 32/36/40, 36/40/50, DN 100  
 : 22/25/28/32/36/40  
 : 3X0,75MM2  
 :  
 - P1: 620  
 : 50 Hz  
 : 1 x 220-240  
 : 3 A  
 Cos phi - - : 0,92  
 : 2800 /  
 (IEC 34-5): IP44  
 (IEC 85): F  
 : 1.2  
 : H05VV-F  
 : SCHUKO  
 :  
 : 7.3  
 : 10

## SOLOLIFT2 WC-3 50



SOLOLIFT2 WC-3

EAN

8.5  
CE,TR,LGA,VDEEMV,VDE  
ISO9906:2012 3B

32/36/40, 36/40/50, DN 100  
22/25/28/32/36/40  
3X0,75MM2

50 °C

998.2 / 3

- P1: 620  
50 Hz  
1 x 220-240

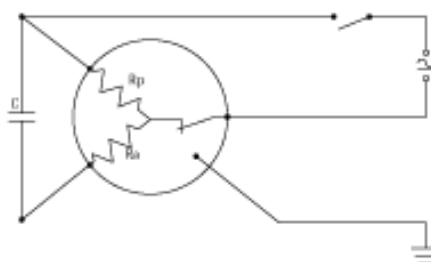
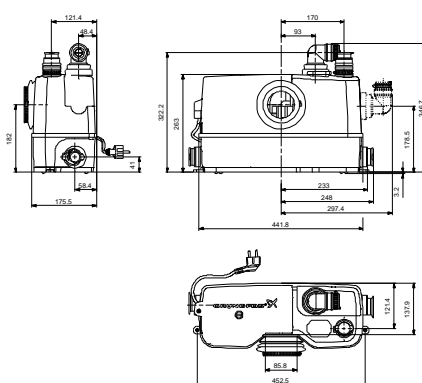
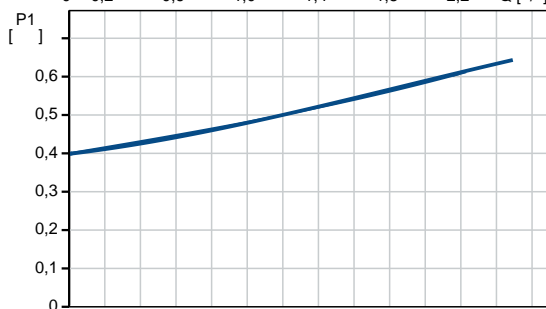
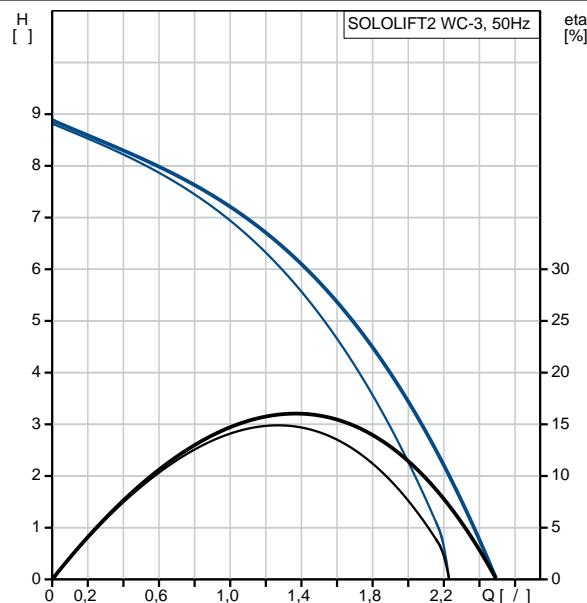
3 A

Cos phi - 0,92

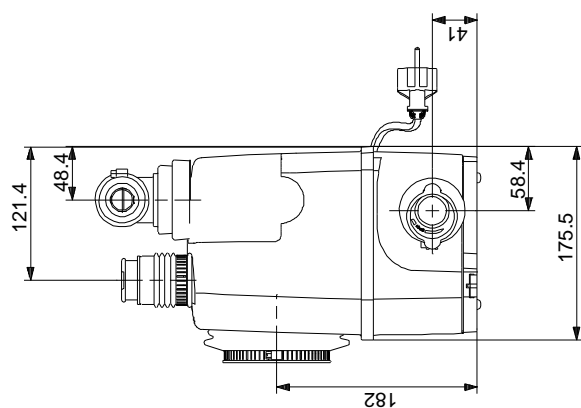
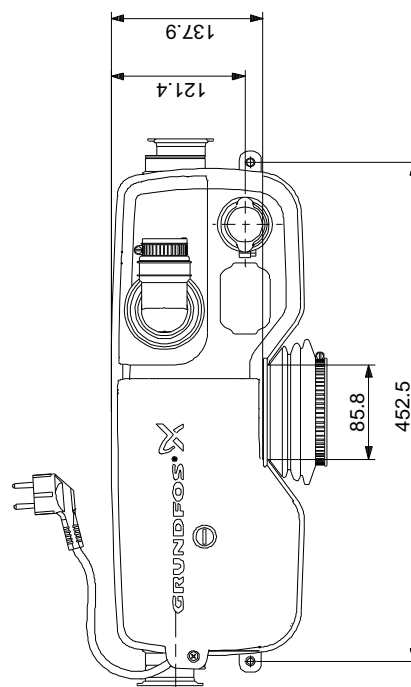
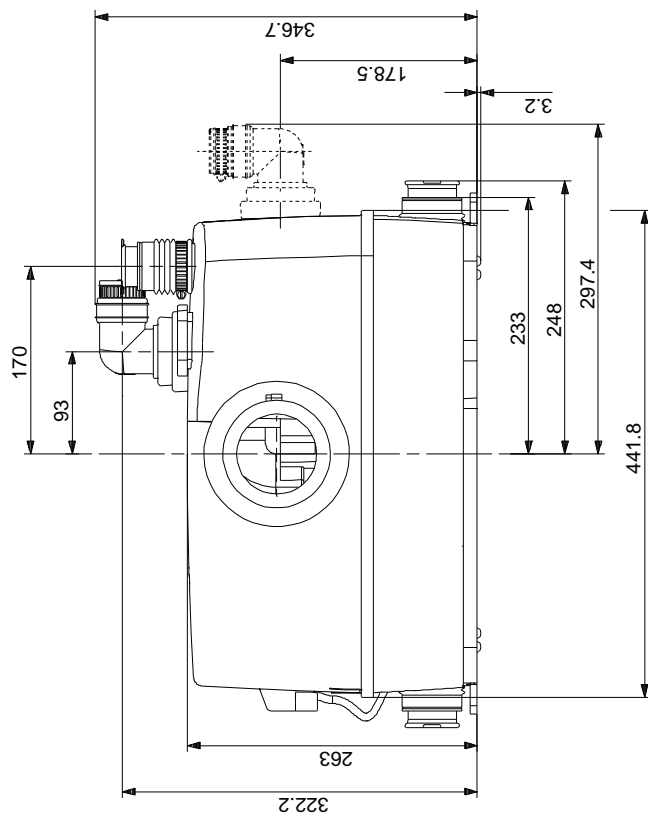
2800 /  
(IEC 34-5): IP44  
(IEC 85): F  
THERMIK S06-150-05  
1.2  
H05VV-F  
SCHUKO

7.3

10



## SOLOLIFT2 WC-3 50



## SOLOLIFT2 WC-3 50

